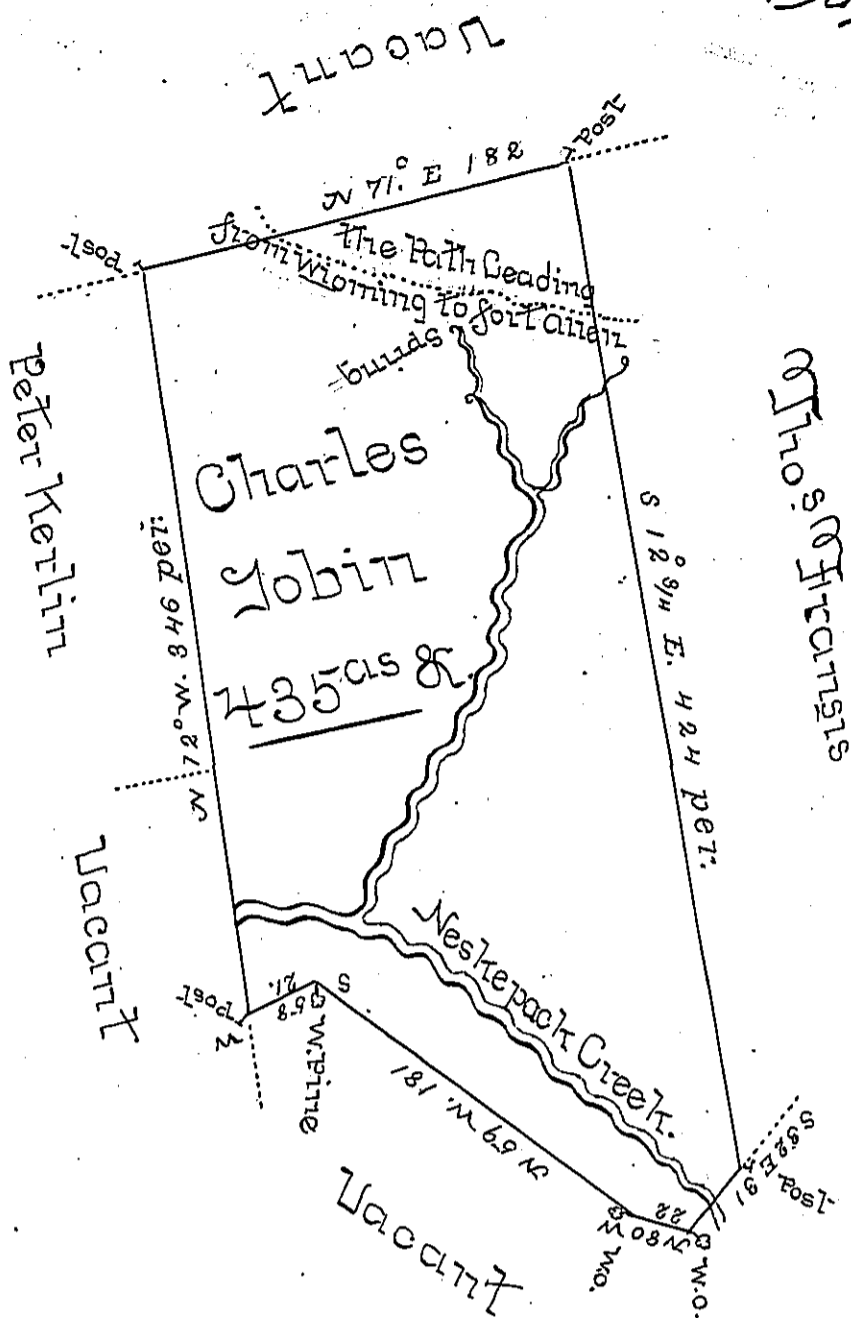


Sugar Loaf 282
Luzerne
See Pg. 268.

(USE)



A Draught of a tract of land Called _____ Situate on
 the Path leading from the Mouth of Nescopeck to
 Fort Allen in [obl.] a fine Spring & joining Land
 Survd for Peter Kerlin [obl.] Stoke Township Luzerne
 (formerly Northumb.) County [obl.] four Hun-
 dred & thirty five acres and allowance of Six P
 Cobl.] for Roads &c Surveyed for Charles Jobin
 the 10th Day of Apr[obl.] 1787 in Pursuance of
 a warrant Dated the 1st Day of [obl.] 1784
 July

To John Lukens Esq
 Survey Genl

by Wm Gray D.S.

IN TESTIMONY that the above is a copy of the original remaining on file in the
 Department of Internal Affairs of Pennsylvania, made con-
 formably to an Act of Assembly approved the 16th day of
 February, 1833, I have hereunto set my Hand and caused
 the Seal of said Department to be affixed at Harrisburg, this
 _____ second _____ day of _____ March _____ 1897.

James W. Fatta
 Secretary of Internal Affairs.